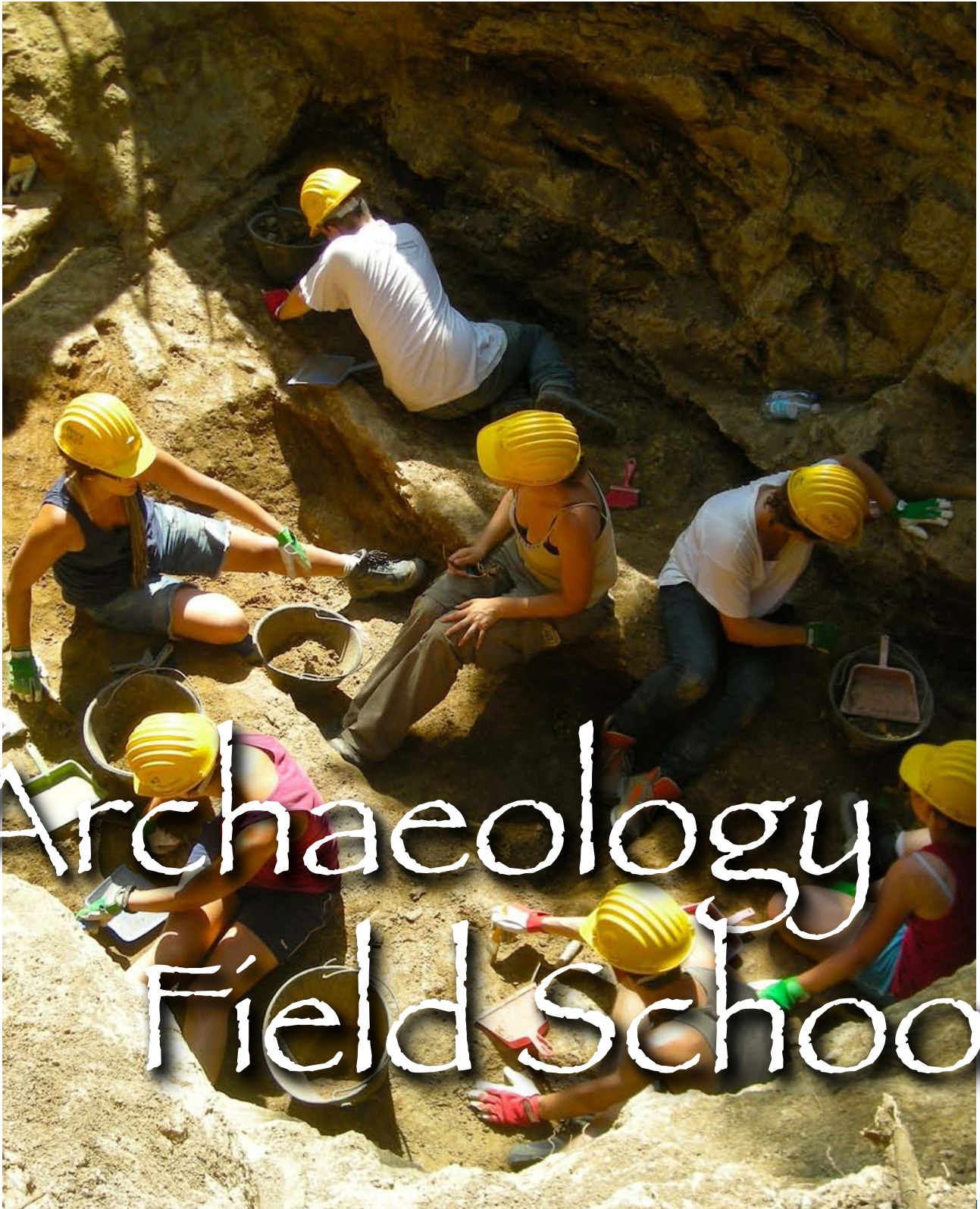


ITALY
Tuscanía



Archaeology
Field School

SUMMER 2012



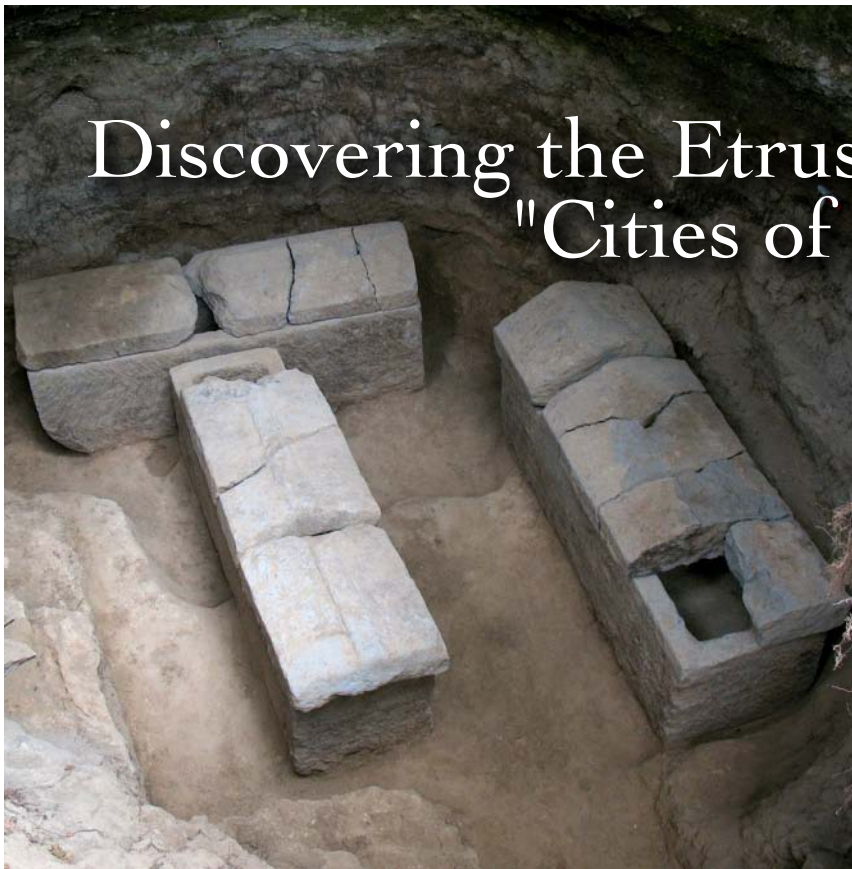
Basilica of San Pietro at Tuscania, 11th century



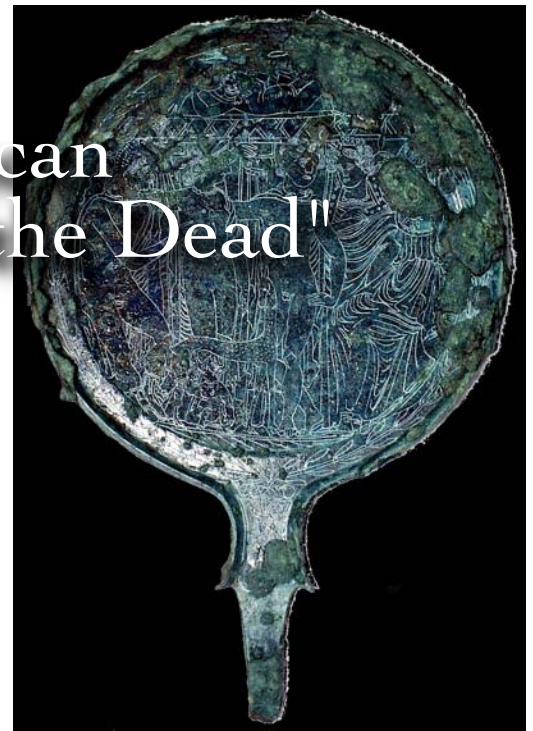
A detail of a fresco inside the Basilica

CONTENTS

Introduction.....	3
The site.....	3
Further details	4
General information for the JULY field school	5
General information for the AUGUST field school	6
Suggested readings	7



Discovering the Etruscan "Cities of the Dead"



Above: An incised bronze mirror with gods from a tomb near Tuscania, 3rd - 2nd cent. BC
Left: Three stone sarcophagi inside a tomb near Tuscania, 3rd - 2nd cent. BC
Below: Archaeologist exploring a tunnel in a tomb

Introduction

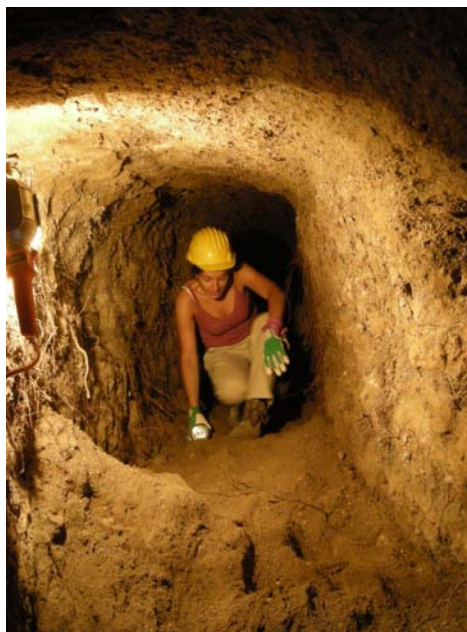
Lorenzo de' Medici and CAMNES will run a four-week and a two-week intensive Archaeology Field School under the direction of a team of professional archaeologists. The main goal of this program is to provide participants with an opportunity to learn and work in a real excavation environment while gaining an understanding of ancient Etruscan culture and archaeological methods. In previous sessions of the Field School participants have uncovered some exceptional and important archaeological finds such as the famous mirror with incised gods, now exposed at the National Museum of Tuscania.

At the school's campus of Tuscania and on selected field trips participants will explore major features of Etruscan culture and the methodologies utilized in classical archaeology. Participants will play a full role in the excavation of the Etruscan necropolis (city of dead) near Tuscania. By examining material evidence, so abundant in this region, participants will be given the opportunity to learn about the lives of the ancient Etruscans from archaeological evidence and literary sources.

Whether you are a current archaeology or anthropology student or simply someone interested in learning more about the subject, this program will provide an exciting and unique opportunity for a firsthand look at archaeological fieldwork and a new approach in understanding ancient civilizations.

The Site

The archaeological area of Tuscania is composed of a broad number of necropolises scattered around the modern town, which once probably housed the ancient settlement. Starting from 2005 LdM, and recently with CAMNES, started to investigate two newly discovered "cities of the dead" (Pian delle Rusciare and Podere Pratino) in the nearby woods of Tuscania both corresponding to the 3rd-2nd century BC. Both necropolises present ipogee tombs, underground environments in which Etruscan people buried their dead and deposited their belongings by celebrating funerary rituals. Many tombs had been violated but a good number was found intact revealing an incredible number of



ancient artifacts of various kind and materials. One tomb incredibly held 47 graves with a total of 450 objects that LdM and CAMNES are currently restoring

Further Details

The LdM/CAMNES archaeological field school in Italy of will accompany the participants through an incredible journey and inspiring environment in which not only this project will give the possibility to dig and bring back to light 2200-years-old artifacts and structures of the Etruscan civilization, but also understand modern cultural aspects of Italian participants and small countryside towns of breathtaking beauty. The course will also provide a good background in general archaeology methodologies as well as the most important aspects of Etruscan history, art and archaeology. Participants will stay in Tuscania and absorb the magical atmosphere of this ancient Medieval town situated in the heart of ancient Etruria.

During the stay participants will have the opportunity to visit together with their instructors the most important sites of Etruscan interest in the surroundings. Weekends are a perfect chance to explore the nearby countryside and discover the castles, towns and amazing aspects of this land including the warm Mediterranean area just over 30 min. away or the even closer Lake Bolsena just 18 min. away.



An unviolated tomb with multiple graves with their goods and human remains, 3rd - 2nd cent. BC

General Information for the JULY field school - 4 Weeks

Duration:

Arrival Thursday June 28th
Departure Saturday July 28th

Location:

Podere Pratino, Tuscania (VT)
LdM Campus, Italy.

Tuition:

See separate price list on web site

Additional costs:

none

Prerequisites and Requirements:

- An up-to-date tetanus inoculation
- Medical/travel insurance
- It is of paramount importance that every participant communicates to the enrollment offices any allergies, food intolerances or any kind of medical issues upon enrollment.
- No prerequisites and no experience of archaeology or knowledge of Italian are needed. The principal qualifications include a strong academic record, a desire to learn more about archaeology and the Etruscan civilization, and an enthusiasm to dig.
- Participants must bear in mind that the archaeological field school of Tuscania is a full-time workshop within a professional archaeological research project that includes a five day per week involvement including lessons, archaeological field activities and visits. Participants have Saturdays and Sundays off.
- The schedule includes a lot of fieldwork and walking during field trips. While at the archaeological site, fieldwork requires digging, stooping, bending and exposure to sun, wind and/or rain. This field school is not recommended to participants with allergies to sun and/or dust.

Outline of Schedule

In the first part of the course, participants take classes that introduce them to the civilization of the ancient Etruscans as well as to basic archaeological theory and practice. Participants also undertake a number of visits to local Etruscan sites and field trips to some world-famous Etruscan monuments, such as Roselle, Vetulonia, Populonia or the Art and Archaeology Museum of Maremma at Grosseto. The final three weeks of the course are spent as full participants in an archaeological team undertaking the excavation of a series of important Etruscan burial sites, it is therefore requested full cooperation and hard fieldwork labour. Participants must bear in mind that working days go from Mondays to Fridays included.



Unguentary for oil and perfumes, 3rd - 2nd cent. BC

Equipment and Materials

Participants are responsible for proper usage and storage of their assigned tools and materials.

Each participant is required to personally provide the following equipment, necessary to work on the archaeological dig:

- Simple, comfortable clothing for working in hot weather
- Safety-shoes
- Good-quality 100% cotton hat
- Strong sunscreen
- Bug spray
- An A4 size note-book to be used as an Activity Journal.

Participants must bear in mind that all above-mentioned equipment and materials are MANDATORY and must be brought from home. If participants are found devoid of any of these items, the director of the project may deny excavation access.

Further details will be given during the first class.

Participants will be provided with necessary work and study materials, covered by the tuition.

Tuition and Application

Prospective applicants must contact **LdM** for further details about the program and how to apply.

A maximum of **20** and a minimum of **5** participants are accepted, with preference given to early applicants.

Deadline for applications: May 15th, 2012

The Tuition Fee includes

- the entire course for a minimum of 148 contact hours and 6 credits (no additional registration fees required)
- transfer from Rome International Airport 'Leonardo da Vinci' to Tuscania and back
- accommodation in a typical and suggestive B&B, double room with private bathroom
- weekday breakfast at the B&B or at a Café
- weekday lunch at restaurant
- travel connected with course related activities
- scheduled museum entries
- social and cultural events organized by the school

The Tuition Fee does NOT include

- meals other than scheduled (i.e. dinner, week-end meals, etc)
- beverages (to be paid on site)
- required personal materials (to be brought from home)

Further details and suggestions about expenses will be given during enrollment and first classes.

To Enroll:

See contact address or web site links on last page.

General Information for the AUGUST field school - 2 Weeks

Duration:

Arrival Monday August 13th
Departure Wednesday August 29th

Location:

Podere Pratino, Tuscania (VT)
LdM Campus, Italy.

Tuition:

See separate price list on web site

Additional costs:

none

Prerequisites and Requirements:

- An up-to-date tetanus inoculation
- Medical/travel insurance
- It is of paramount importance that every participant communicates to the enrollment offices any allergies, food intolerances or any kind of medical issues upon enrollment.
- No prerequisites and no experience of archaeology or knowledge of Italian are needed. The principal qualifications include a strong academic record, a desire to learn more about archaeology and the Etruscan civilization, and an enthusiasm to dig.
- Participants must bear in mind that the archaeological field school of Tuscania is a full-time workshop within a professional archaeological research project that includes a six day per week involvement including lessons, archaeological field activities and visits. Participants have only Sundays off.
- The schedule includes a lot of fieldwork and walking during field trips. While at the archaeological site, fieldwork requires digging, stooping, bending and exposure to sun, wind and/or rain. This field school is not recommended to participants with allergies to sun and/or dust.

Outline of Schedule

In the first part of the course, participants take classes that introduce them to the civilization of the ancient Etruscans as well as to basic archaeological theory and practice. Participants also undertake a number of visits to local Etruscan sites and field trips to some world-famous Etruscan monuments, such as Roselle, Vetulonia, Populonia or the Art and Archaeology Museum of Maremma at Grosseto. The final three weeks of the course are spent as full participants in an archaeological team undertaking the excavation of a series of important Etruscan burial sites, it is therefore requested full cooperation and hard fieldwork labour. Participants must bear in mind that working days go from Mondays to Saturdays included.



*Bronze deer-shape mirror
handle with palm leaves,
3rd - 2nd cent. BC*

Equipment and Materials

Participants are responsible for proper usage and storage of their assigned tools and materials.

Each participant is required to personally provide the following equipment, necessary to work on the archaeological dig:

- Simple, comfortable clothing for working in hot weather
- Safety-shoes
- Good-quality 100% cotton hat
- Strong sunscreen
- Bug spray
- An A4 size note-book to be used as an Activity Journal.

Participants must bear in mind that all above-mentioned equipment and materials are MANDATORY and must be brought from home. If participants are found devoid of any of these items, the director of the project may deny excavation access.

Further details will be given during the first class.

Participants will be provided with necessary work and study materials, covered by the tuition.

Tuition and Application

Prospective applicants must contact **LdM** for further details about the program and how to apply.

A maximum of **20** and a minimum of **5** participants are accepted, with preference given to early applicants.

Deadline for applications: June 30th, 2012

The Tuition Fee includes

- the entire course for a minimum of 90 contact hours and 3 credits (no additional registration fees required)
- transfer from Rome International Airport 'Leonardo da Vinci' to Tuscania and back or to Florence if part of Certificate program
- accommodation in a typical and suggestive B&B, double room with private bathroom
- weekday breakfast at the B&B or at a Café
- weekday lunch at restaurant
- travel connected with course related activities
- scheduled museum entries
- social and cultural events organized by the school

The Tuition Fee does NOT include

- meals other than scheduled (i.e. dinner, week-end meals, etc)
- beverages (to be paid on site)
- required personal materials (to be brought from home)

Further details and suggestions about expenses will be given during enrollment and first classes.

To Enroll:

See contact address or web site links on last page.

Suggested Readings

• *Etruscan Studies: Journal of the Etruscan Foundation* 1994-2010 (available online at: http://scholarworks.umass.edu/etruscan_studies/)

• *Rasenna: Journal of the Center for Etruscan Studies* 2007; 2009 (available online at: <http://scholarworks.umass.edu/rasenna/>)

• S. Haynes, *Etruscan Civilization. A Cultural History*, Oxford (Oxford University Press) 2005.

• G. Camporeale et alii, *The Etruscans outside Etruria*, Los Angeles 2004.

• M. Torelli, *The Etruscans*, New York 2001.

• M. Sprenger, G. Bartoloni, *The Etruscans. Their History, Art, Architecture*, New York 1983.

• Stephan Steingraber, *New Discoveries and Research in the Field of Southern Etruscan Rock Tombs*, in



• T. F. Borrelli and M.L. Targia. *The Etruscans. Art, History, Architecture* - British Museum press.

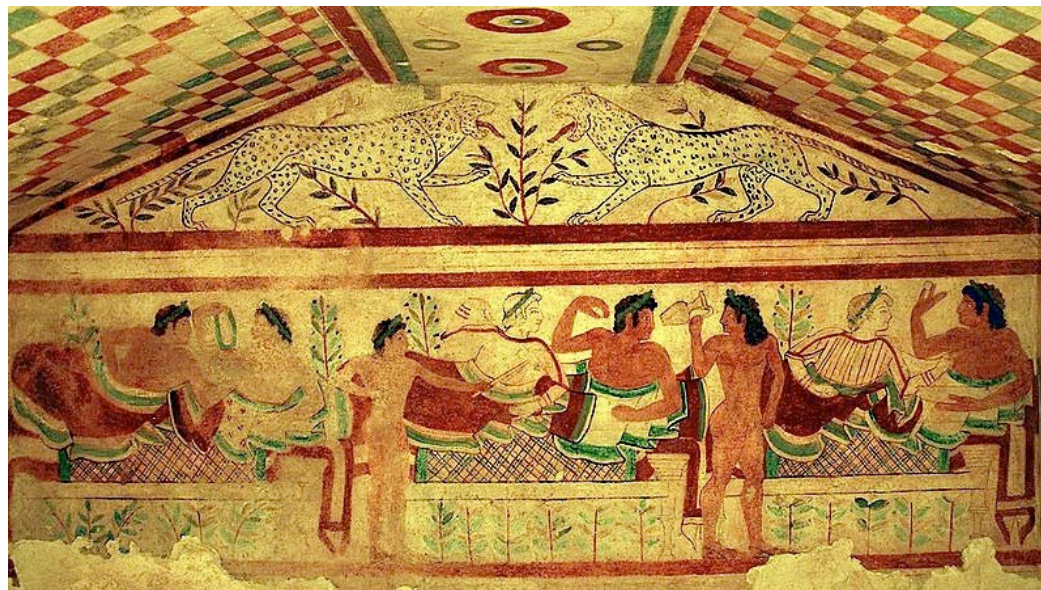
• S. Haynes, *Etruscan Civilization. A Cultural History*, Oxford (Oxford University Press), 2005.

• C. Renfrew and P. G. Bahn, *Archaeology. Theories, Methods and Practice*, London (Thames and Hudson), 2004.

• B. C. Trigger, *A History of Archaeological Thought*, Cambridge (Cambridge University Press), 2005.

• K. Greene, *Archaeology: An Introduction*, London and New York (Routledge), 2002.

Further details of the ongoing and other archaeological projects of CAMNES and LdM are available at:



Tomb of the Leopards at Tarquinia, 5th cent. BC

Etruscan Studies: Journal of the Etruscan Foundation, VOLUME 3 – 1996, p. 75.

• G. Camporeale, S. Giuntoli, *Il parco archeologico dell'Accesa a Massa Marittima* (English version), Follonica 2000.

www.camnes.org or info@camnes.org

www.lorenzodemedici.org

LdM Main Campus - Florence, Italy
Via Faenza 43, 50123 - Florence, Italy
p: +39-055.28.73.60 or +39-055.28.72.03
f: +39-055.23.98.920
info@lorenzodemedici.it

LdM US Student Services + Academic Relations
3600 Bee Caves Road, Suite 205B
Austin, TX 78746
toll free: 1.877.765.4LDM (4536)
p: 512.328.4636
f: 512.328.4638
info@lorenzodemedici.org